



360 Main St.
Enterprise FL 32725
(386) 259-5900

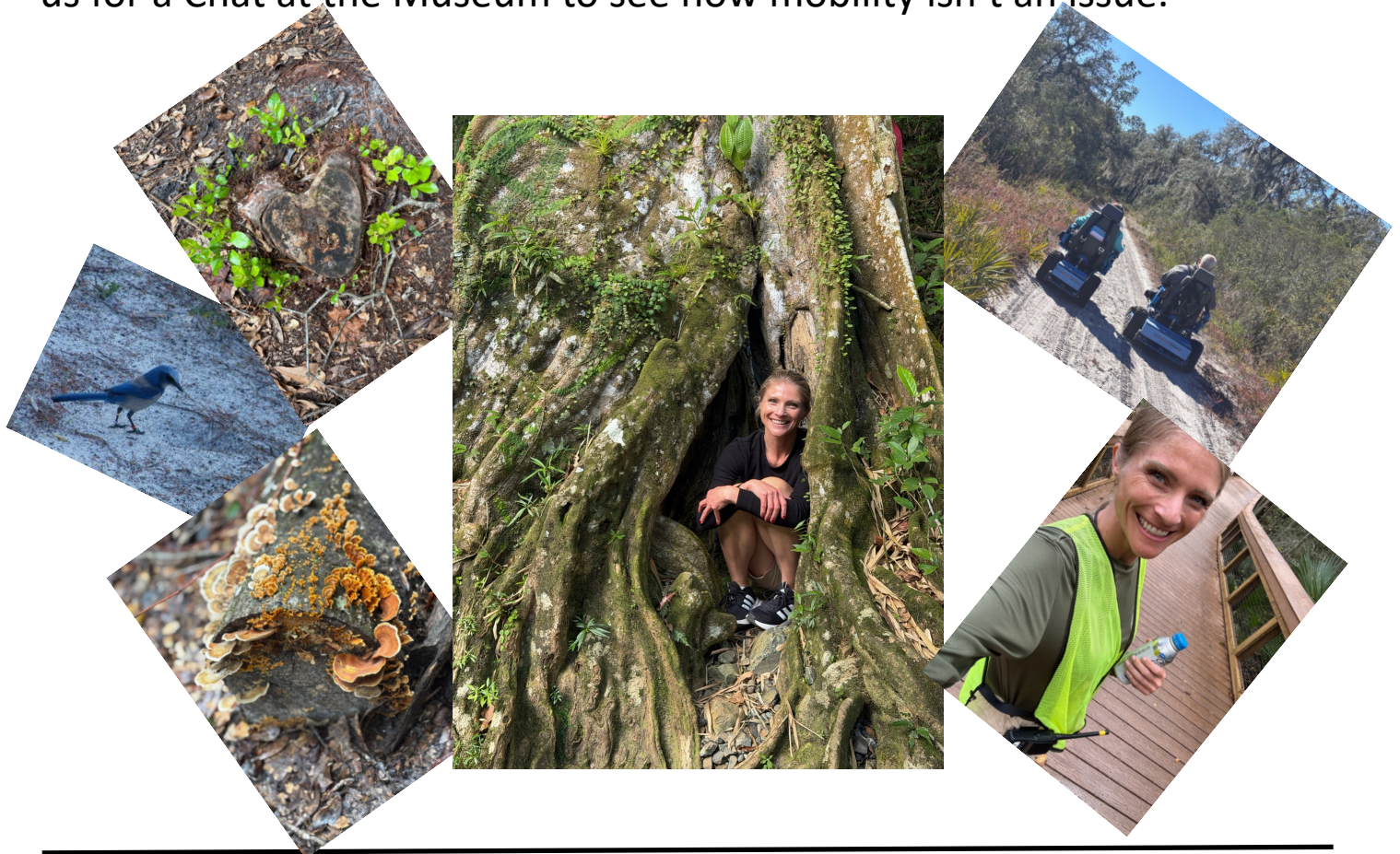
HOURS: Thurs, Fri & Sat 10am – 2pm
<https://www.oldenterprise.org>

Visit Facebook for news & events:
<https://www.facebook.com/EnterpriseHeritageCenterAndMuseum>

Exploring Nature with Limited Mobility

Saturday 4 April at 3pm with Brittany Murdock

Brittany is a trail guide and accessibility advocate who helps people of all ability levels experience the outdoors. Through her work with Rolling Hikes at Blue Spring State Park, in her upcoming trail guide and beyond, she empowers others to reconnect with nature—at their own pace. Join us for a Chat at the Museum to see how mobility isn't an issue.



**No entrance fee however a donation to the Enterprise Museum is appreciated.
EPS is operated and supported solely by volunteers, donations and grants.**

A COPY OF THE OFFICIAL REGISTRATION AND FINANCIAL INFORMATION MAY BE OBTAINED FROM THE DIVISION OF CONSUMER SERVICES BY CALLING TOLL-FREE WITHIN THE STATE. REGISTRATION DOES NOT IMPLY ENDORSEMENT, APPROVAL, OR RECOMMENDATION BY THE STATE." 1-800 435-7352 Reg#CH24965
<https://csapp.fdacs.gov/CSPublicApp/CheckACharity/CheckACharity.aspx>

Come visit us and enjoy Enterprise: Yesteryear, Today, and Tomorrow.